



COMMUNITY CALENDAR

Jan. 17 to Jan 31, 2011

PATIENT CENTER IS CLOSED WEEK OF JANUARY 17

Nancy Slough (MPRI Patient Concierge) is out of the office this week, so the Patient Resource Center will remain closed. Please keep Nancy and her family in your thoughts and prayers. If you would like to leave a note for Nancy, you can give cards to any of our front desk staff members, and we will get the notes to her.

If you have any non-medical inquiries, please continue to contact Amanda Burnham. If you need access to the Patient Center to use the computer, washing machine, or other amenities; please contact Amanda to schedule an appointment. I appreciate your patience as I do double duty this week to cover for Nancy.

On Thursday, we will have free copies of The Herald Times available which includes information about happenings over the weekend.

Amanda Burnham
Manager, Marketing and Development
aburnham@mpri.org
812.349.2151

Massage Therapist Available Therapeutic massages are available in January to patients, caregivers and family members of patients, and staff members. **Lydie Robsham** is a licensed massage therapist and is offering her services for \$40 per hour. Lydie has 15 years of experience and offers the following treatments: *Relaxing Swedish Massage, Deep Tissue Massage, Neuromuscular Therapy for Injuries, Active Isolated Stretching, Lymph Drainage.*

To schedule an appointment contact: Amanda Burnham, or you may text Lydie at 561.856.0131 or contact her at Jill House, 812.339.5455 ext. 134.

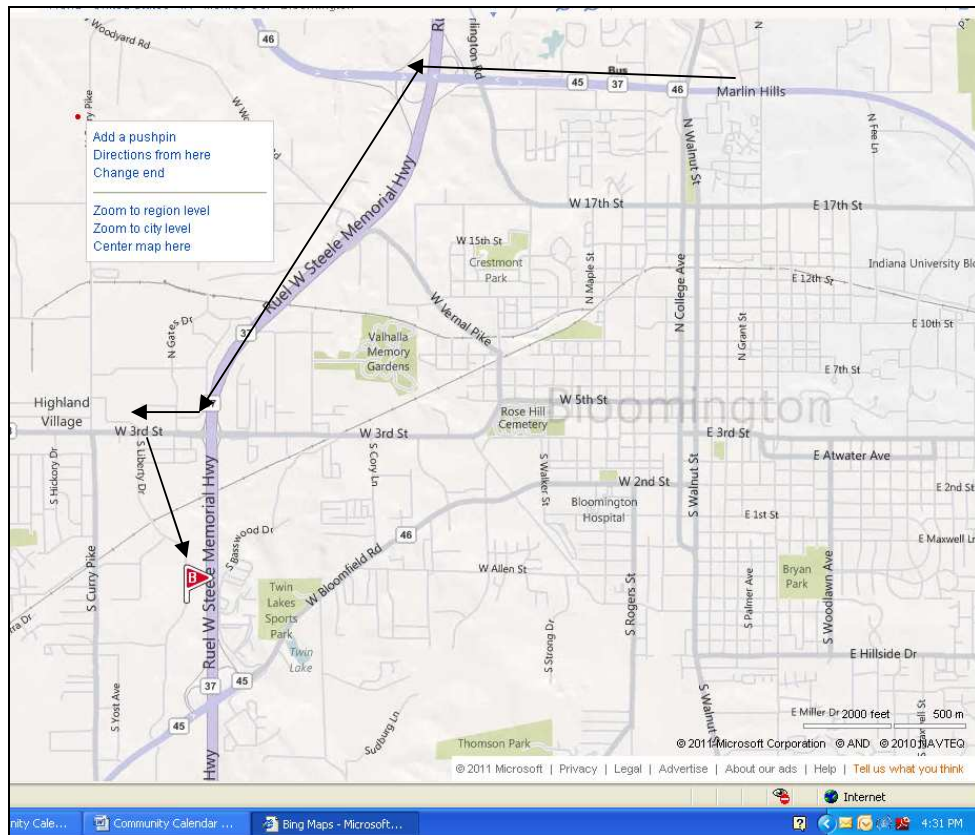
Dietician Available Do you need suggestions or assistance related to nutrition, diet, or problematic symptoms from treatment that affect eating? **Registered Dietician, Melissa Mercer** is now available to you in the MPRI clinic on Mondays from 10:00 am to 4:00 pm. If you have questions, need some suggestions or advice or would like to schedule a time to meet with Melissa individually, please contact the MPRI Nursing staff.

Upcoming Events:

January 24, 2011 – Dinner & Wine Tasting – Homewood Suites, 1399 S. Liberty Drive, 5:00 to 7:00 pm. MPRI patients and their families invited to attend, \$5 per person. Menu: Seasoned pork chops, rice pilaf, carrots salad bar, beer and wine samples from Oliver Winery. **RSVP to Amanda Burnham by Noon on Friday, January 21.**

Directions to Homewood Suites from the Proton Center

Take a right onto the bypass and head toward IN SR 37. Take 37 South to Bedford. Take the Third Street Exit and make a right. At the second light (Liberty Drive) make a Left. Homewood Suites is on the left, just past Menards.



January 25, 2011 – Meet and Greet 4:00 – 5:30 pm, the guest speaker will be Dawn Wallace, Medical Dosimetrist – Dawn is on the team that develops patient treatment plans.

February 1, 2011 – Meet and Greet 4:00 – 5:30 pm, the guest speaker TBD.

February 6, 2011 – Proton Therapy System Tour 10:00 a.m. to Noon, RSVP to Amanda Burnham for the tour. This is a walking tour that is not handicapped accessible. Participants must be at least 13 years of age, may not be pregnant and those who require the use of a pacemaker are not eligible to participate.